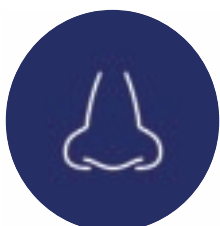




## U CONCEPT® CONTRIBUTES TO MYOFUNCTIONAL REEDUCATION



BREATHING



SWALLOWING



CHEWING



POSTURE



FACIAL BALANCE



- ▷ Physiological & adjustable
- ▷ Biocompatible silicone
- ▷ Flexible & comfortable
- ▷ Painless & scentless
- ▷ Individualized to patient

**NEW**

▷ FLEXIBLE  
or ▷ SEMI-RIGID

[u-concept-ortho.com](http://u-concept-ortho.com)



## THE ORIGINS OF THE CONCEPT

### EARLY MEDICAL CARE IN ORTHODONTICS

More than 25 years ago, Carl F. Gugino already stated with evidence that:

«Any patient with malformations/malocclusions also has Myofunctional problems, more or less important. The earlier the treatment is initiated, the earlier the physiology of the patient will adapt to the concept».

Even though multiple Universities were involved already in Myofunctional and early approach orthodontics, it was often carried out using hard resin devices during the entire treatment.

On the initiative of Carl F. Gugino, this new approach of Myofunctional and behavioral education led to the development of 2 phase orthodontic treatment: 1st phase the orthopedic part followed by the mechanical part.

In a quarter of a century, the Myofunctional early treatment of patients has become more than a reality, to be now today widely distributed in Europe and around the world, clearly evolving towards a total comprehensive medical approach.

The new **U Concept®** devices, developed by **Savaria-Dent** follow this evolution and are the results of our 25 years of experience in Myofunctional education both in Europe and internationally.

Thanks to our early (from 90's) involvement in the concept of Myofunctional education, we offer you today a wide range of medical grade silicone devices, manufactured in Europe.

Taking into account our dr's observations and recommendations, the **U Concept®** was born: **The Ultimate Bio Trainer**.

Thanks to our simplified selection guide, the **U Concept®** – The Ultimate Bio Trainer, is easy to implement. **U Concept®** is oriented towards quality rather than quantity. Offering a concise but complete range of devices, covering all deformation classes and age groups.



MYOFUNCTIONAL EDUCATION, A TREATMENT CONCEPT FOR EVERYBODY

## TARGET

### LOOKING FOR A SUSTAINABLE BALANCE

their treatment directly affects the long-term stability of these treatments.

A stable dental positioning is the result of the early actions on muscular balance, reached by removing the obstructions related to dysfunction: breathing, swallowing, chewing, facial balance, and the posture.

Thanks to the evolution of the materials and the effort of dr's using Myofunctional educators, last generation devices are both flexible and resilient.

Nevertheless, the device itself is only a therapeutic tool supporting the practitioner to validate the different treatment steps that were determined by the diagnostic & individualized treatment plan.

In support of this therapeutic tool, communication with the patient through tools such as:

- visual communication media
- examples of similar cases
- exercises, information documents
- telephone follow-up
- dedicated assistance
- photos of treatment progress

These tools will support the achievement of the objective and will make the patient an actor of his treatment.

In order to inform you and your patient in the best way, following communication tools are available:

- a complete packaging with user guide
- an information and awareness-raising brochure for parents and patients used in waiting room
- a poster dedicated to drawing parents' attention to the concept of education
- a detailed brochure dedicated to professionals including a quick selection guide
- a didactic briefcase for the practitioner containing the various devices, for demonstration purposes during the first meetings with the parents and the patient.



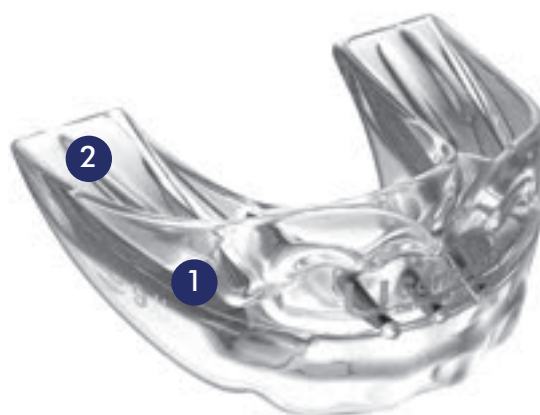
Building your  
wellness dream team with  
**U**Concept 

*Dr. C.F. Gugino*

## CHARACTERISTICS

### ADJUSTABLE BUCCAL SHIELDS AND MOLAR BITE PLANES

- Buccal maxillary shield is adjustable to patient's morphology (in case of low inserted frenum), using for example a crown scissor or scalpel **1**
- Molar bite planes are extended to have, at least, second molar first cusp rest on it, thus preventing unwanted posterior eruption **2**



### BI-MAXILLARY DENTAL GUIDES AND MUSCLE BUMPERS

- The integrated muscle bumpers allow the functional unlocking and neutralize the functional matrix to create a neutral zone for dental arches development and allow natural growth to occur without constraints

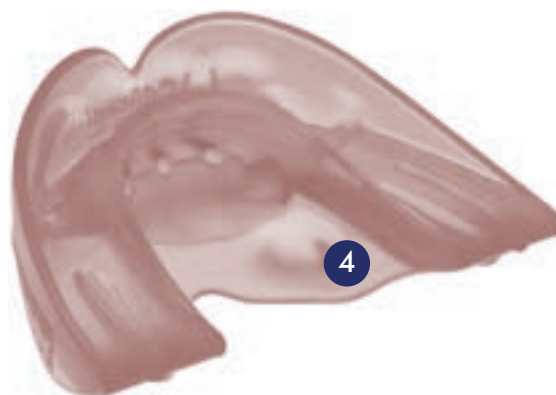


### THICKENED INTER MOLAR BITE PLANES AND EDGE TO EDGE ANTERIOR CONSTRUCTION

- Produces the mechanical unlocking through a downward movement of the condyle and an unforced protrusion **3**
- Unlocks mandibular natural growth

### TONGUE GUIDE WITH LATERAL STIMULATORS **4**

- Enables re-positioning of tongue into the palate
- Produces maxillary transversal development
- Avoids low rest position of tongue as soon as device is worn



### BIOCOMPATIBLE FLEXIBLE OR SEMI-RIGID SILICONE "MADE IN EUROPE"

- Our unique soft or semi-rigid biocompatible silicone produces a response to dental/muscular pressure or deficiency, unlike hard materials
- As a consequence, **U Concept®** devices will generate a muscular stretching effect in brachio facial patterns (hyper tonic cases) and a muscular stimulation in dolicho facial patterns (hypo tonic cases)

## MOTIVATE YOUR PATIENTS

### HAVE YOUR PATIENT SELECT HIS FAVORITE COLOR

U Concept® devices are available in 3 trendy colors to facilitate patient's involvement and acceptance: Pure Transparent, Dark Blue electric and Water Pink.

### SOFT, SEMI-RIGID AND ODORLESS

Our soft, semi-rigid appliances are manufactured in Europe with biocompatible silicone, fully odorless to facilitate acceptance and productive treatment progress.

### POSTER FOR YOUR WAITING ROOM

Myofunctional treatments are now more and more requested by parents directly. To inform your patients and their parents that your practice is offering such treatments, we have developed a dedicated poster for your waiting room. Ask your local distributor or representative to obtain your own copy.

### MAKE IT SIMPLE TO UNDERSTAND

Parents and patients are frequently asking about myofunctional early treatments and request further information. We offer a dedicated brochure, highlighting the key concepts of myofunctional therapy, to be displayed in your waiting room.

### USER GUIDE AND WEARING CARD

Our U Concept® packaging kit includes a patient user guide describing both patient and parents, how to wear and clean the appliance.

As well, it includes a wearing card for patient to track the time he is wearing the appliance and the practice team to follow up patient's participation.

### PACKAGING KIT

- Indicates type and color of device
- Includes a patient user guide
- Includes a wearing card
- Includes a storage box

### TRAINING SESSIONS

Your local distributor is offering specific training sessions for doctors, myofunctional therapists, hygienists and dental assistants to learn how to implement myofunctional therapy in your practice. Contact him to know more about it.

Pure TRANSPARENT



Water PINK



Dark BLUE electric



## Ukiddy – FROM THE AGE OF 3

Our new UKiddy appliance is dedicated to take care of Class 1, 2, 3 malocclusions as early as 3 years and until 6 years molars are appearing. It can easily replace the pacifier and thumb, finger or lip sucking bad habits, while adding specific features to improve breathing, swallowing and mastication:

- Labial contact stimulator
- Lingual guide with lateral stimulators
- Buccal shields to neutralize the functional matrix
- 3 integrated breathing holes
- Lip bumpers
- Thickened inter molar bite planes and edge to edge anterior construction



## UStart – 4 TO 6 YEARS

- Milk or mixed dentition
- Initial correction of Class 1, 2, 3 under 6 mm overjet
- Arch form reshaping and pre-dental guidance
- Produces unlocking of the mandible
- Corrects: open bite, overjet, overbite, cross bite, dental crowding and midlines

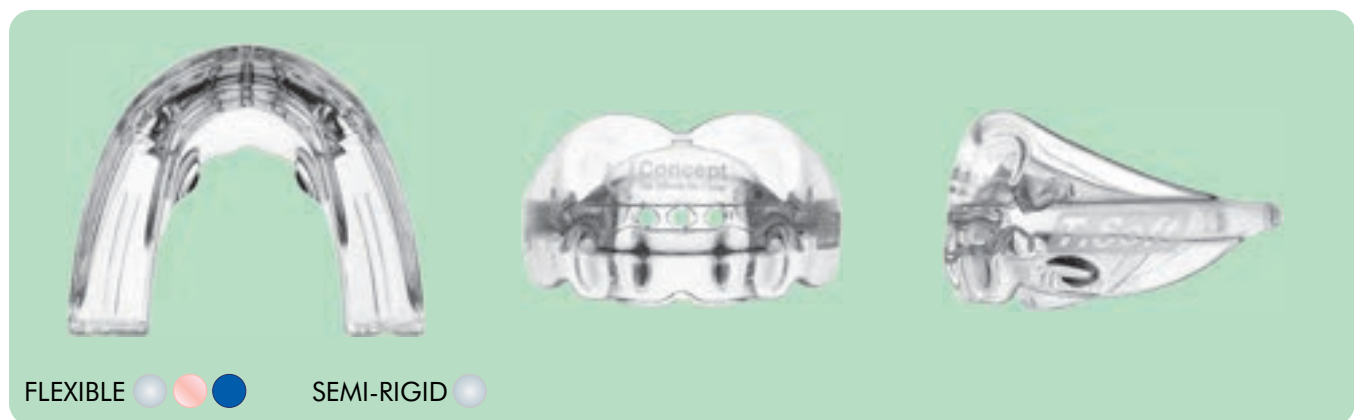


MYOFUNCTIONAL EDUCATION, A TREATMENT CONCEPT FOR EVERYBODY

## UTrainer – 6 TO 8 YEARS

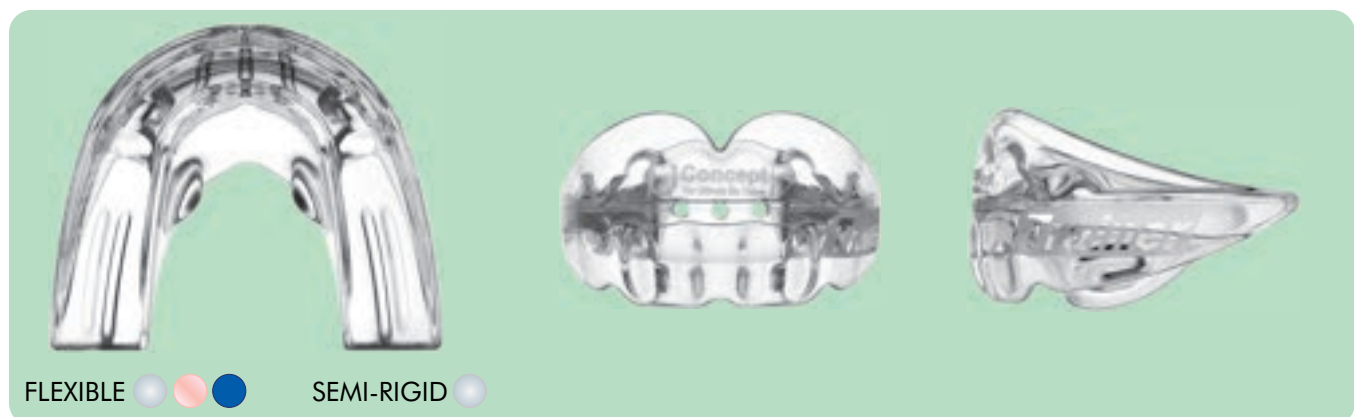
SOFT

- Mixed or permanent dentition
- Initial correction of Class 1, 2, 3 under 6 mm overjet
- Arch form reshaping and pre-dental guidance
- Produces unlocking of the mandible
- Corrects: open bite, overjet, overbite, cross bite, dental crowding and midlines
- Space maintainer in case of early loss of milk cuspids



## UTrainer – 8 TO 14 YEARS +

- Mixed or permanent dentition
- Initial correction of Class 1, 2, 3 under 6 mm overjet
- Arch form reshaping and pre-dental guidance
- Produces unlocking of the mandible
- Corrects: open bite, overjet, overbite, cross bite, dental crowding and midlines
- Space maintainer in case of early milk cuspids loss



## ▷ UClass2PRE – FROM 6 TO 12 YEARS

- Dedicated to correct severe class 2 malocclusions with labial incompetency, as a first intention or phase 1 device, previous to standard U Class 2,
- Integrates an overjet of 4mm,
- Mandibular rest area is increased to facilitate a progressive and unforced protrusion,
- The mandibular increased mobility will facilitate the wearing of U Class 2 PRE, closing lips and reduce the tension on TMJ.

## ▷ UClass2 – FROM 6 TO 12 YEARS

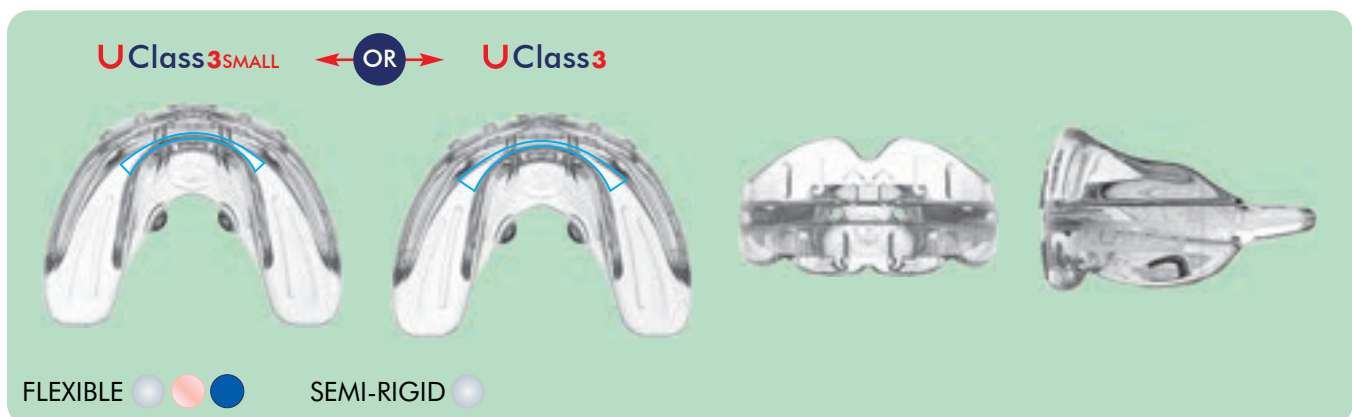
- Mixed or permanent dentition
- Correction of open bite and overjet greater than 6mm
- Increased action on labial reeducation and labio-mentalis
- Replaces **UTrainer SOFT** and **UTrainer** in case of an overjet greater than 6 mm and pronounced dental crowding



## ▷ UClass3SMALL – FROM 4 TO 6 YEARS

- Mixed or permanent dentition with patients in Class 3 malocclusion
- Releases pre-maxillary growth potential
- Prevents from mandibular pro-sliding

## ▷ UClass3 – FROM 4 TO 12 YEARS

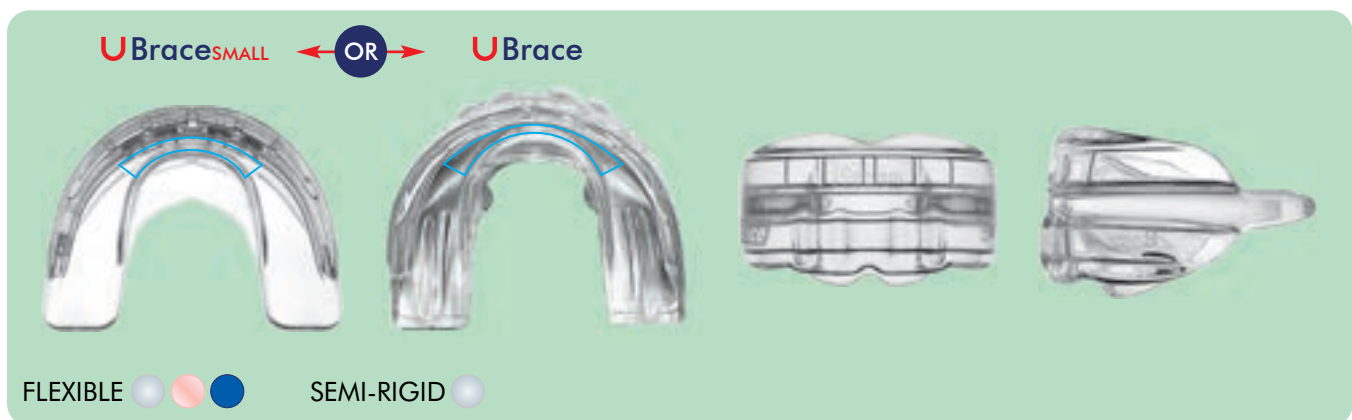




## UBrace<sup>SMALL</sup> – FROM 6 TO 9 YEARS

## UBrace – FROM 10 YEARS +

- Mixed or permanent dentition
- Ideal for patients already wearing fixed mechanics or aligners if there is a need to correct dysfunctions in parallel (low position of tongue, lip contact rehabilitation, muscular stretching)
- Accelerates tooth alignment in parallel with fixed mechanics
- Protects gingival mucosa when practicing sport
- In adults: allows easy differential diagnosis in case of TMJ pathology diagnosis
- Produces muscular stretching and pain release with patients suffering from bruxism
- Reduces snoring



## Nasometer BY C.F. GUGINO

The NEW Nasometer, developed by Dr. C. F. Gugino for UConcept® is a great and simple diagnostic tool dedicated to register the nasal exhalation capacity of your patient and rate it nostril per nostril.

It will allow you to evaluate initial exhalation level and its evolution over time, once the myofunctional treatment is in progress and motivate your patient by showing him the progression of its nasal breathing recovery.



## CASES TREATED WITH U CONCEPT® DEVICES

### PATIENT 1

BEFORE

AFTER 11 MONTHS



AGE AT BEGINNING OF TREATMENT  
5 and ½ years

#### SYMPTOMS

- Lingual dysfunction
- Open bite
- Arch form discrepancy
- Narrow maxillary

DEVICES USED DURING MYOFUNCTIONAL TREATMENT

U Kiddy and U Start

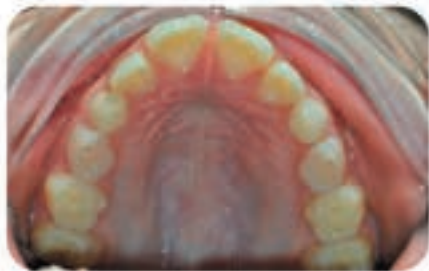


Documents provided by Dr. Veronika DERCSAR-PONTARLIER/France. All rights reserved.

**PATIENT 2**

BEFORE

AFTER 6 MONTHS



AGE AT BEGINNING OF TREATMENT

10 years

SYMPTOMS

- Open bite
- Lingual suction
- Narrow maxillary
- Lower lip dysfunction
- Mouth breathing

DEVICES USED DURING MYOFUNCTIONAL TREATMENT

**U Class2**



Documents provided by Dr. Veronika DERCSAR-PONTARLIER/France. All rights reserved.



# UPilot FOR TEENS

MYOFUNCTIONAL FINISHING DEVICE IN PERMANENT DENTITION



- ▷ 7 sizes
- ▷ Sterilizable size selector kit
- ▷ Soft or semi-rigid biocompatible silicone
- ▷ Supports first and second molars
- ▷ Adjustable to the patient
- ▷ Made in Europe
- ▷ ISO 13485



MYOFUNCTIONAL EDUCATION, A TREATMENT CONCEPT FOR EVERYBODY

# U Pilot

Our New **U Pilot** appliances are in line with myofunctional reeducation as a finishing device mainly used in permanent dentition.

Once the dysfunctions have been corrected with our existing **U Concept®** product line, **U Pilot** appliances will be dedicated to finish the case precisely with our choice of 7 sizes.

**U Pilot** devices are made of comfortable and biocompatible silicone.

Their use is ideal and recommended around 10/11 years in permanent dentition or if just few milk teeth remain and when a case can be predictably finished with **U Pilot** devices.

Besides, in few cases, when our regular **U Concept®** appliances are too short in the posterior area, one of the 7 **U Pilot** sizes can represent a good alternative.



## FEATURES/BENEFITS

- Ideal for finishing cases around 10/11 years
- Continues myofunctional reeducation
- Fully covers the second molars
- Available in 7 sizes and 7 size selectors
- Made of soft and comfortable biocompatible silicone
- Can be sterilized
- Can be used in case of small relapses
- Easily adjustable without polishing
- Manufactured in Europe in our ISO 13485 certified factory

### HOW TO SELECT THE RIGHT SIZE using the U Pilot Selector Kit

- 1 Use our U Pilot size selectors on the patient's maxilla, making sure they fully cover the second molars
- 2 The vertical buccal lines on the size selector are featuring interdental space between centrals, laterals, cuspids and premolars as a guide for proper size selection
- 3 Once you have the right size, place the appliance in the mouth and adjust it to your patient if necessary,
- 4 Sterilize the size selectors used for the measurement.



DEVICES			PART NUMBER
			<b>UPilot T1</b>
			<b>UPilot T2</b>
			<b>UPilot T3</b>
			<b>UPilot T4</b>
			<b>UPilot T5</b>
			<b>UPilot T6</b>
			<b>UPilot T7</b>
			<b>UPilot</b> Size template

MYOFUNCTIONAL EDUCATION, A TREATMENT CONCEPT FOR EVERYBODY

## STARTER KIT

Starter Kit content:

- **15 devices** assorted according to frequency of use
- A set of **7 sterilizable selectors**



Part Number: U PILOT KIT

Building your  
wellness dream team with

**U**Concept 

*Dr. C.F. Gugino*

ALL APPLIANCES AVAILABLE NOW IN FLEXIBLE OR SEMI-RIGID BIOCOMPATIBLE SILICONE

	IN COMBINATION WITH FIXED MECHANICS	CL 2	CL 1	CL 3
AGE 3				
AGE 4		<b>U Kiddy</b>		
AGE 5				
AGE 6		<b>U Start</b>		<b>U Class3 SMALL</b>
AGE 7				
AGE 8	<b>U Brace SMALL</b>	<b>U Trainer SOFT</b>		
AGE 9				
AGE 10		<b>U Class2 PRE</b> or 	<b>U Trainer</b>	
AGE 11		<b>U Class2</b>		<b>U Class3</b>
AGE 12	<b>U Brace</b>			
AGE 13			<b>NEW</b>	
AGE 14			<b>U Pilot</b> Size 1 to 7	

**U Pilot** Size template



Verzion 3.0  
Valid from: 01.10.2022



Distribution and Manufacturing:  
**Savaria-Dent Kft.**  
 Hungary, 9700 Szombathely, Dr. Szabolcs Zoltán Str. 5/A  
 +36 30 638-1790 • www.savariadent.hu • uconcept@savariadent.hu