



## Providing the highest quality precision instruments to the profession.

All Ixion instruments are made from German Surgical Stainless Steel with a beautiful satin finish which reduces glare.

Cutting edges are inserted to provide superior strength and sharpness. All instruments have a Box Joint which provides reliable smooth action and ensures the tips align perfectly every time.

All Ixion instruments have a Unique Streamline Design providing a perfectly balanced instrument.

All Ixion instruments are finished with Round Smooth Edges providing maximum comfort & safety for you and your patient.



LINGUAL PLIERS	4
CUTTERS	12
UTILITY PLIERS	18
WIRE BENDING PLIERS	26
HAND INSTRUMENTS AND HEMOSTATS	34
MISCELLANEOUS	38
LABORATORY PLIERS	44
WASHING, HANDLING AND STERILISATION INSTRUCTIONS	50
INTERNATIONAL DISTRIBUTORS	51
INDEX	52





## Lingual Series

This range of lingual instruments has been developed specifically to facilitate the 'art' of lingual orthodontics. We consulted many lingual orthodontists in order that we were able to produce a range of instruments which fully met their needs.

The small inter bracket widths and working in parts of the mouth which are hard to reach with traditional orthodontic instruments gives the lingual technique an added difficulty.

With these factors in mind we have developed a range of instruments with longer handles for the difficult to reach areas, the heads of the instruments are smaller to accommodate the lack of space and all instruments have the unique Ixion smooth contours for added patient comfort.



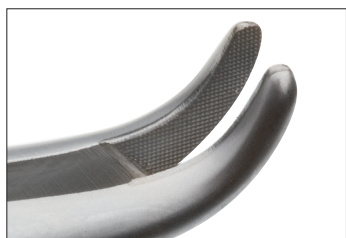




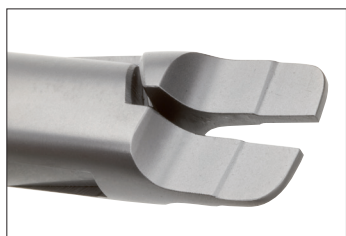
**ix950**  
**Weingart 60° Angle**  
Small serrated tips are angled at 60° for easy access in the posterior region. Maximum .018" (.46mm) wire.



**ix951**  
**Weingart 60° Angle with T.C.**  
Same features as ix950 with the addition of Tungsten Carbide tips. Maximum .018" (.46mm) wire.



**ix952**  
**Stepped Tweed Arch Plier**  
Designed for torquing and bending both square and rectangular wires. The fine tips allow excellent access even in lower anterior region.





**ix953**  
**Cinch Back**

The serrated tips of this instrument hold the wire securely while bending the wire 90° distal to the buccal tube, avoiding patient discomfort. For use with Nickel Titanium wires .012" - .018" (.30 x .46mm).



**ix955**  
**Bracket Removing Plier**

The narrow sharp tips, wedge between the edges of the bracket base and tooth surface to remove direct bond brackets safely and comfortably.



**ix956**  
**Mini Ligature Cutter 50° Angle Upper**

The narrow tip is angled at 50° for excellent access to the upper arch. The inserted tips ensure precision cutting of ligature wires and elastics.

Maximum Cutting Capacity:  
soft wire up to .012" (.30mm)





**ix956s**  
**Micro Ligature Cutter Upper 50° Angle Upper**

Same features as ix956 but with shorter handles.

Maximum Cutting Capacity:  
soft wire up to .012" (.30mm)



**ix957**  
**Mini Ligature Cutter 60° Angle Lower**

The narrow tip is angled at 60° for excellent access to the lower arch. The inserted tips ensure precision cutting of ligature wires and elastics.

Maximum Cutting Capacity:  
soft wire up to .012" (.30mm)



**ix957s**  
**Micro Ligature Cutter 60° Angle Lower**

Same features as ix957, but with shorter handles.

Maximum Cutting Capacity:  
soft wire up to .012" (.30mm)





**ix911**  
**Micro Ligature Cutter**

The small, narrow and sharp pointed tips allow easy access to the most difficult areas. The inserted tips ensure precision cutting of ligature wire & elastics. Maximum Cutting Capacity: soft wire up to .012" (.30mm)

Caution: This delicate instrument is designed for the removal of soft stainless steel ligatures to a maximum of .012" diameter.



**ix911L**  
**Micro Long Handled Ligature Cutter**

Same features as IX911 but with longer handles. Maximum Cutting Capacity: soft wire up to .012" (.30mm)

Caution: This delicate instrument is designed for the removal of soft stainless steel ligatures to a maximum of .012" diameter.



**ix958 / ix958s**  
**Flush Cut Distal End Cutter Standard / Small**

The flush cut feature of this instrument allows the archwire to be cut flush and safely held, eliminating the possibility of patient discomfort resulting from archwire protrusion. The Tungsten Carbide inserted tips ensure precision cutting of ligature wire and elastics.

Minimum Cutting Capacity:  
ix958 - .016" (.41mm),  
ix958s .012" (.30mm)  
Maximum Cutting Capacity:  
ix958 archwires up to .021" x .025"  
(.55 x .64mm)  
ix958s archwires up to .016" x .025"  
(.41 x .64mm)





### ix959

#### Long Handled Distal End Cutter

This instrument features extra-long handles and a slim box joint with a compact head to ensure easy access in hard to reach areas. The T.C. inserts provide unsurpassed performance and long wear.

Minimum Cutting Capacity:

.012" (.30mm)

Maximum Cutting Capacity:

.018"x.025" (.46 x.64mm)

### ix940

#### Curved Smaha

Fine curved tips but strong enough for inserting archwires and excellent for placing elastomerics to lingual brackets.



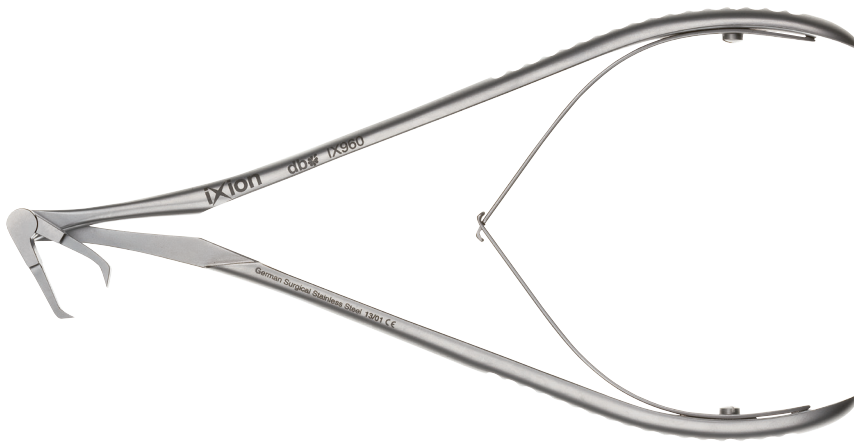
### ix632

#### Lingual Bracket and Bondable Tube Holder

Reverse action Tube placer designed for placing bondable tubes and lingual brackets and attachments. Curved design allows placement with an unobstructed view.







### ix960

#### Lingual Anterior Debonding Plier

Specifically designed to enable the clinician to easily debond 3M Incognito Brackets and other Lingual Bracket systems with a customised base.

The debonding of the bracket is successful when the sharp edges of the metal arms are placed between the adhesive and enamel interface, the handles are slowly closed so that a peeling action of the bracket base from the gingival towards the incisal completes the safe and successful debond.



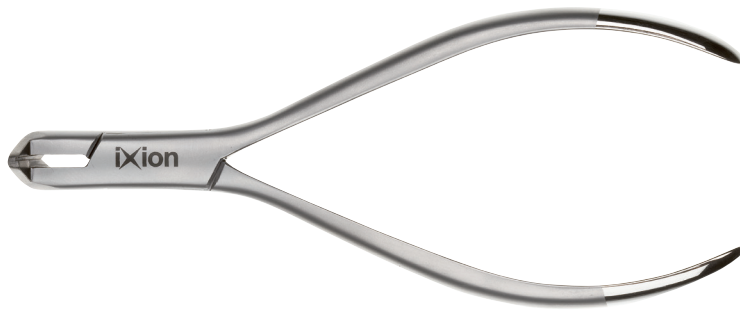
The sharp edges of the metal arms are manufactured from a special hardened steel which gives long lasting sharpness.

The Incognito system is a trademark of 3M.



Cutters

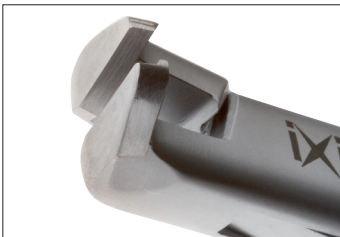




### **ix900** **Distal End Cutter**

This instrument cuts wires close to the buccal tube and safely holds the distal end. The Tungsten Carbide inserts ensure precision cutting, long wear and unsurpassed cutting performance.

Cutting Capacity:  
archwires up to .021" x .025"  
(.55 x .64mm)



### **ix901** **Long Handled Distal End Cutter**

This instrument features extra long handles and a compact head to ensure easy access in hard to reach areas. This instrument cuts wires close to the buccal tube and safely holds the distal end. The Tungsten Carbide inserts provide unsurpassed performance and long wear.

Cutting Capacity:  
archwires up to .021" x .025"  
(.55 x .64mm)



Using None Flush Cut  
Distal End.



Using Flush Cut Distal  
End.

### **ix902 / ix902s** **Flush Cut Distal End Cutter** **Standard / Small**

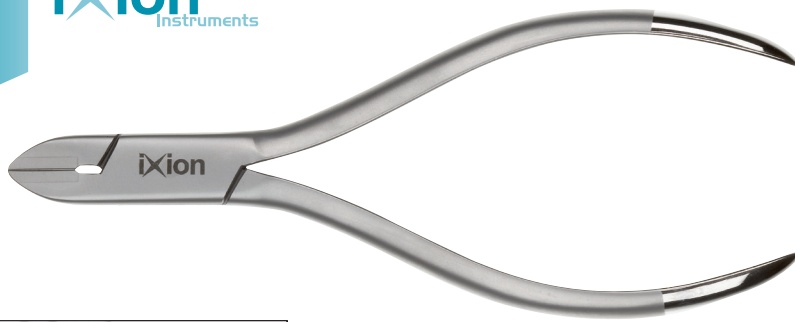
The flush cut feature of this instrument allows the archwire to be cut flush and safely held eliminating the possibility of patient discomfort resulting from archwire protrusion.

ix902 Minimum Cutting Capacity:  
.016" (.41mm)

ix902 Maximum Cutting Capacity:  
archwires up to .021" x .025"  
(.55 x .64mm)

ix902s Minimum Cutting Capacity:  
.012" (.30mm)

ix902s Maximum Cutting Capacity:  
archwires up to .016" x .025"  
(.41 x .64mm)



### ix905

#### Hard Wire Cutter

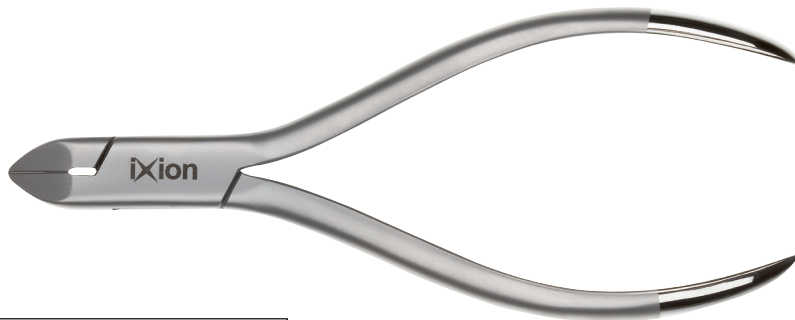
Easily cuts any size archwire or pin. The inserted tips ensure precision cutting and perfect tip alignment.

Minimum Cutting Capacity:

.012" (.30mm)

Maximum Cutting Capacity:

archwires up to .021"x .025"  
(.55 x .64mm)



### ix906

#### Hard Wire Cutter 15° Angle

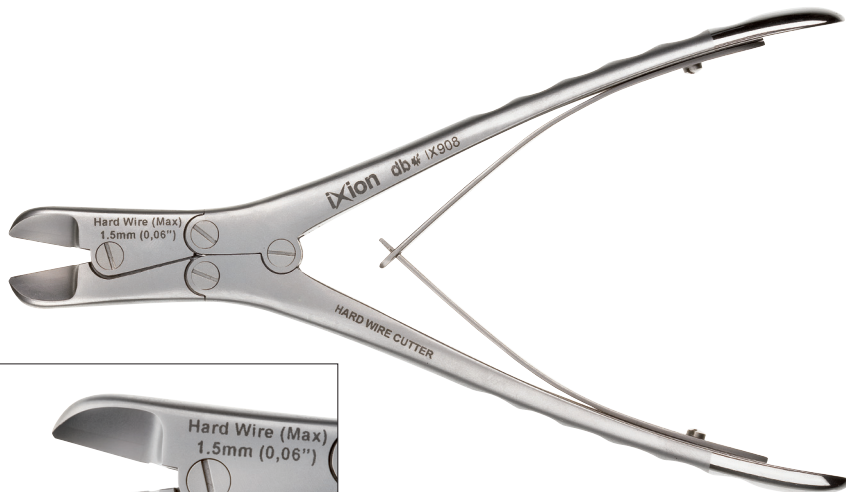
Same features as standard hard wire cutter ix905 with the advantage of 15° angle for easier access to the posterior area.

Minimum Cutting Capacity:

.012" (.30mm)

Maximum Cutting Capacity:

archwires up to .021"x .025"  
(.55 x .64mm)



### ix908

#### Heavy Duty Hard Wire Cutter

This instrument cuts up to 1.5mm wire with ease due to its triple action design. Inserted tips ensure precision cutting and perfect tip alignment.

Minimum Cutting Capacity:

.014" (.36mm)

Maximum Cutting Capacity:

wire up to .060" (1.5mm)



**ix910**  
**Pin Ligature Cutter 7° Angle**  
Standard cutter with 7° angled tips to allow easy access and better visibility in difficult to reach areas. Inserted tips ensure precision cutting of ligature wire, pins and elastics.

Maximum Cutting Capacity:  
soft wire up to .016" (.41mm)



**ix911**  
**Micro Ligature Cutter**  
The small narrow and sharp pointed tips allow easy access to the most difficult to reach areas. The inserted tips ensure precision cutting of ligature wire and elastics.

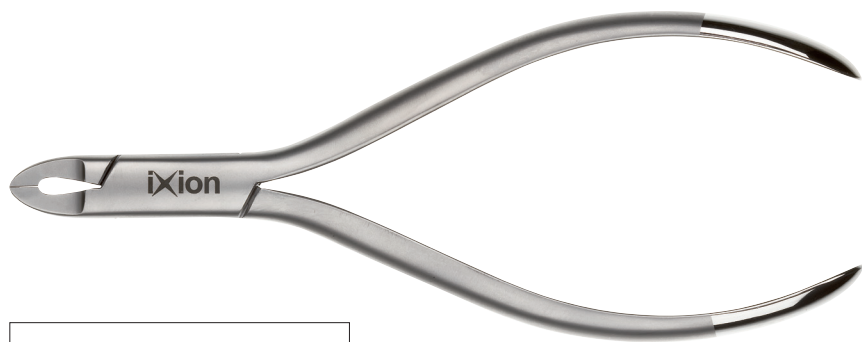
Maximum Cutting Capacity:  
soft wire up to .012" (.30mm)  
Caution: This delicate instrument is designed for the removal of soft stainless steel ligatures to a maximum of .012" diameter.



**ix911L**  
**Micro Long Handled Ligature Cutter**  
Same features as ix911 but with longer handles.







### **ix912**

#### **Standard Ligature Cutter**

This cutter has fine tips for easier access to difficult to reach areas. The inserted tips ensure precision cutting of pins, wire ligatures and elastics.

Maximum Cutting Capacity:  
soft wire up to .015" (.40mm)



### **ix913**

#### **Standard Soft Wire Ligature Cutter**

Same design as ix912 but without inserts.

Maximum Cutting Capacity:  
soft wire up to .012" (.30mm)

# Utility Pliers





### **ix800**

#### **Small Weingart**

The special features incorporated in this Ixion Weingart make this one of the most popular. Matching serrated tips hold wires firmly at a convenient working angle. Carefully tapered beaks fit easily between brackets and are rounded for safety and comfort. Holds round, square and rectangular wires up to .022" x .028" (.56 x .71mm)



### **ix801**

#### **Small Weingart with T.C.**

Same as ix800 but with inserted tips providing maximum wire control and prevents the wire from slipping. Holds round, square and rectangular wires up to: .022"x .028" (.56 x .71mm).

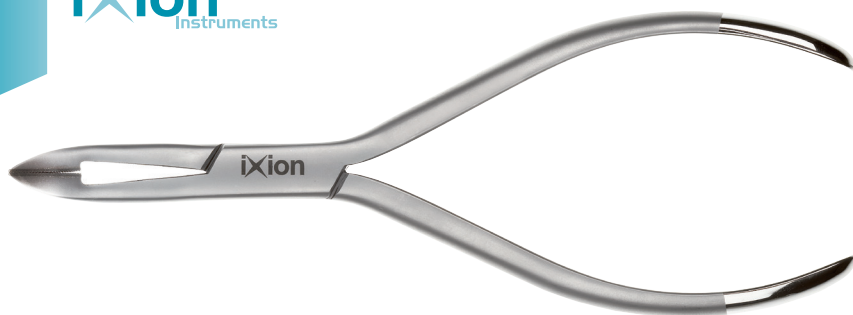


### **ix802**

#### **Large Weingart**

Precision serrated tips are designed to hold heavy wires and prevent the wire from slipping, for the safe and easy insertion or removal of all arches. Holds wire up to .030" (.076mm).





#### **ix803**

##### **Large Weingart with T.C.**

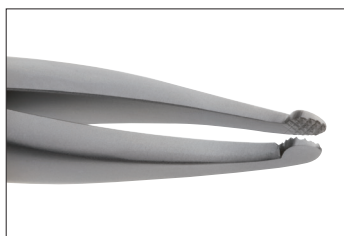
Same as ix802 with inserted tips providing maximum wire control and to prevent the wire from slipping. Holds wire up to .030" (.076mm).



#### **ix804**

##### **Fine Tipped Weingart**

Sturdy construction without inserted tips. This strong but fine tipped utility plier allows excellent access in difficult to reach areas. Holds wire up to .022" x .028" (.56 x .71mm).



#### **ix805**

##### **How Plier (Straight)**

A versatile utility plier with a long tapered tips. The 3/32" diameter tips are serrated to prevent wire slippage. The tips are rounded for patient comfort and safety.

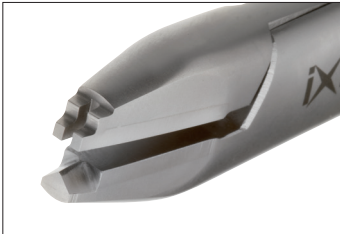




### ix806

#### How Plier (Angled)

Similar to ix805 but with 45° angled tips for convenient access to lingual and other difficult to reach areas. Matching serrated tips hold wires firmly at a convenient working angle.



### ix820

#### Crimpable Archwire Hook Plier

Designed for surgical ball hooks and auxiliaries. The slotted tip holds auxiliaries secure to provide for positive crimping.



### ix834

#### Crimping Plier

For applying crimpable stops to archwires.



#### **ix825**

##### **Posterior Band Remover (Short)**

The plastic pad rests on the occlusal surface of the molar which places the removing tip in the perfect position to catch the gingival edge of the band. Replacement pads are available in 3/16" and 1/8" diameters.

**Replacement Tips 3/16"**

**(5mm) - IX895S**

**Replacement Tips 1/8"**

**(4mm) - IX896S**



#### **ix826**

##### **Posterior Band Remover (Long)**

Same features as ix825 but with a longer band removing arm.

**Replacement Tips 3/16"**

**(5mm) - IX895S**

**Replacement Tips 1/8"**

**(4mm) - IX896S**



#### **ix827**

##### **Direct Bond Remover (Straight)**

Force is applied to the inter bracket tooth surface to remove direct bond brackets safely and comfortably.



#### **ix828**

##### **Direct Bond Remover (Angled)**

Same design as ix827 except the 60° angle allows easier access in difficult to reach posterior brackets.



#### **ix829**

##### **Direct Bond Remover**

Removes brackets easily by holding the side of the bracket in a horizontal position or under the tie wing and applying pressure by torquing or turning in a clockwise motion. The inserted tip provide longevity.



#### **ix835**

##### **Adhesive Removing Plier**

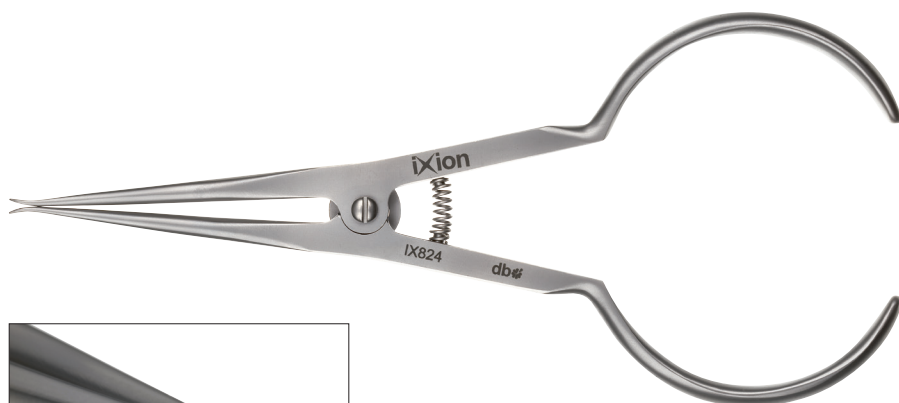
The Vinyl tube rests on the occlusal surface of the tooth ensuring no discomfort to the patient while the sharp metal tip removes adhesive from the labial surface with ease. Replacement Metal Pad - ix836 - Sold in packs of 2. Replacement Vinyl Tube 15cm - ix837



#### **ix840**

##### **Small Adams Plier**

Inserted tips provide excellent wear. Square beak 1mm at tip and parallel at .045" opening. Effective for wires up to .030" (.76mm).



#### **ix824**

##### **Coon Ligature Tying Plier**

Self-locking ligature tying plier with fine beaks for the ease of applying and tying Stainless Steel ligatures.



#### **ix841**

##### **Force Module Separator**

Designed for easy placement of separating elastics.

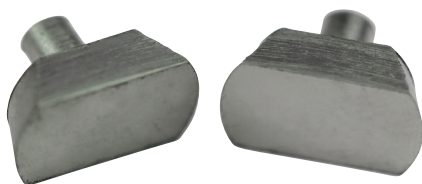




**ix8955**  
Replacement Tips 3/16" (5mm)  
for ix825/826  
Pk 3



**ix8965**  
Replacement Tips 1/8" (4mm)  
for ix825/826  
Pk 3



**ix836**  
Replacement Metal Pad  
for ix835  
Pk 2



**ix837**  
Replacement Vinyl (150mm)  
for ix835



Wire Bending Pliers



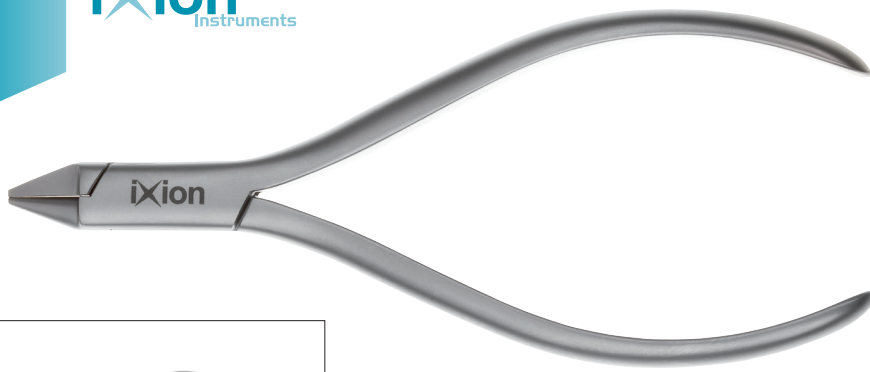
**ix807**  
**Light Wire Plier**  
Same popular design as ix808, but without the cutter or the 2 grooves.



**ix808**  
**Light Wire Plier with Cutter and 2 Grooves**  
The most popular wire bending plier. The Inserted tips provide excellent wear and bend archwires from .012" to .020" (.30mm - .51mm). Beaks are grooved for round wire at 1mm and 2mm from tip. Cutter at the base of beaks cuts archwires from .014" to .020" (.36mm - .51mm).



**ix809**  
**Light Wire Plier with Cutter**  
This popular loop forming and bending plier. Has inserted tips that provide excellent wear. The precise round and square tips bend archwires from .012" to .020" (.30mm - .51mm). Cutter at base of beaks cuts archwires from .014" to .020" (.36mm - .51mm).



#### **ix810**

##### **Bird Beak Plier**

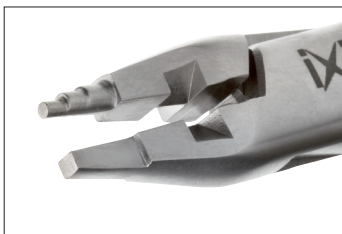
The most popular and versatile plier for working with round wire up to .028" (.71mm). The round beak is precision manufactured to a perfect cone - .025" at the tip. The pyramid beak is exactly .025" wide at the tip.



#### **ix872**

##### **Bird Beak Plier**

Same design as ix810 with the addition of hard steel tips providing maximum wire control and excellent wear.



#### **ix812**

##### **Tweed Loop Forming Plier with Cutter**

Ideal for making consistent uniform loops. The tip has three sections of 1.2mm, 1.8mm and 2.0mm with roughened finish to prevent wire slippage. Can be used with round and square wire up to .021 x .025" (.55 x .64mm). The built in cutter allows wire to be cut from .014" to .020" (.36mm - .51mm).





#### **ix821**

##### **Long Beak Light Wire Plier**

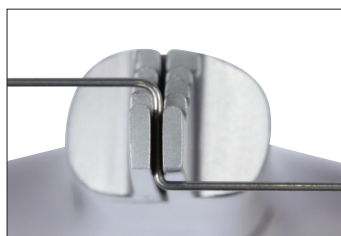
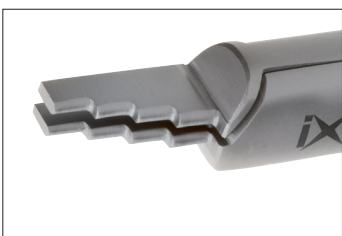
Longer beaks than the ix810 for making precision loops in light wires. Can be used with round and square wire up to .020" (.51mm).



#### **ix814**

##### **O'Brien Loop Forming Plier**

The perfect plier for making Bull, Omega and Closing loops. This plier has one precision cylindrical three-step beak and one concave, with serrated surface to prevent wire slippage. Can be used with round & square wire up to .021 x .025" (.55 x .64mm).



#### **ix815**

##### **Nance Plier**

Precision loop forming with four step tips 3mm, 4mm, 5mm and 6mm. Excellent for round and square wires up to .022" (.56mm). All working edges have been bevelled to prevent wire scoring.



**ix813**

**Tweed Arch Forming Plier**

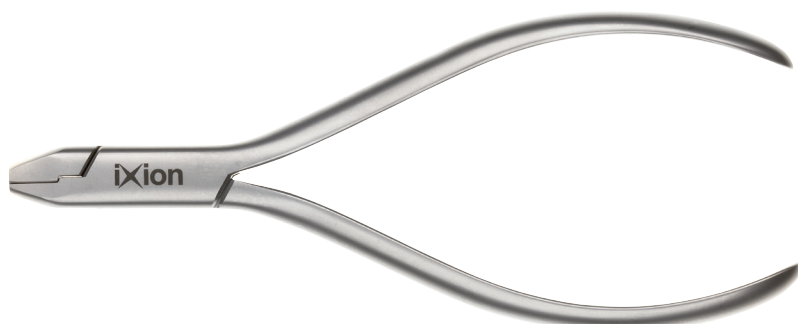
Designed for torquing and bending square or rectangular wires. The blades are designed to be parallel at .020" opening. Can be used on wires up to .021" x .025" (.55 x .64mm).



**ix871**

**Tweed Arch Forming Plier**

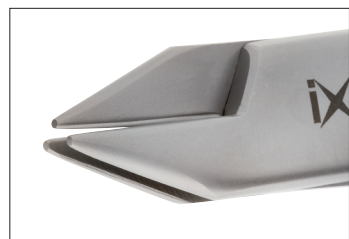
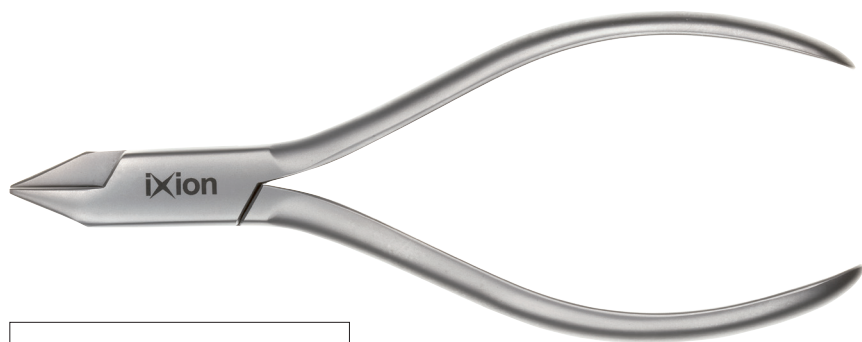
Same design as ix813 with the addition of inserted tips providing maximum wire control and improved gripping.



**ix817**

**De La Rosa**

Precision matched concave and convex tips for smooth contouring of light wire loops. Contours and forms arches without torquing. Can be used on wires up to .021" x .025" (.55mm x .64mm).



**ix816**  
**3-Jaw Plier**

Precision aligned tips are gently rounded for consistent contouring and bending without damaging the archwire. One-piece construction of the double tip ensures superior strength. Can be used on wire up to .030" (.76mm).



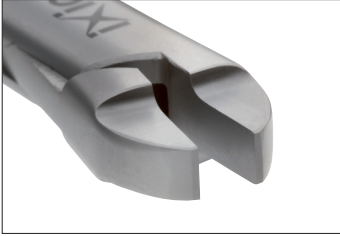
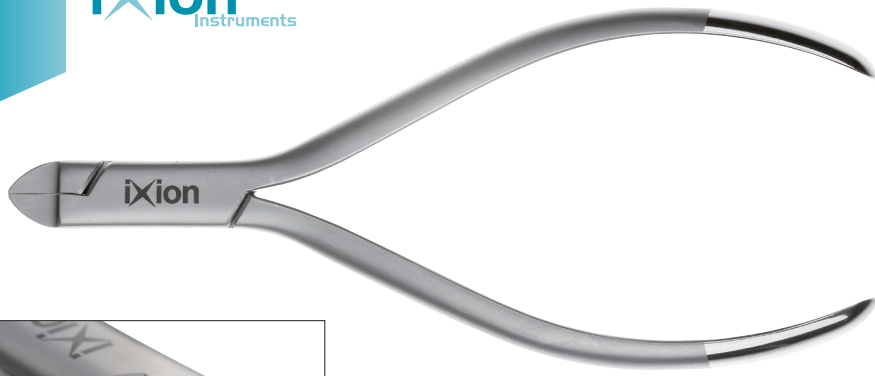
**ix819**  
**Small 3-Jaw Plier**

Same design as ix816 but with slightly smaller tips for working with wire up to .020" (.51mm).



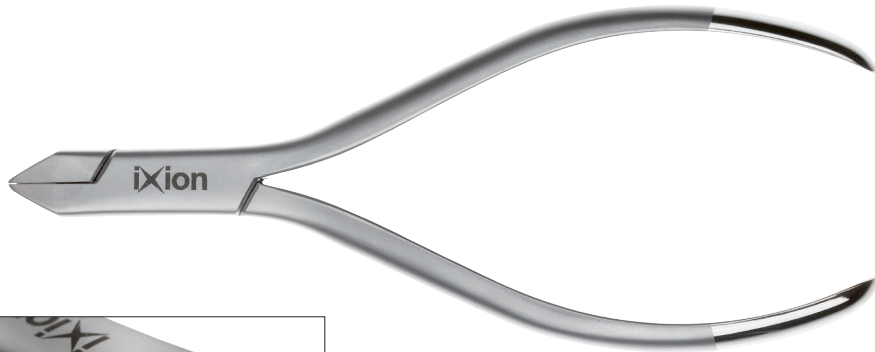
**ix823**  
**Fine 3-Jaw Ni Ti Plier**

The narrow tips allow bending of the archwire between the brackets. To be used on Nickel Titanium wire up to 0.12" (.30mm).



**ix873**  
**Torquing Plier Set**

The torquing plier set allows the accurate addition of torque to square/rectangular archwires. Both Male and Female parts have hard wearing inserted tips.





**ix811**  
**Light Wire Contouring & Cutting Plier**

With longer, more gradually tapered beaks than the ix809, this plier is designed for round wires up to .020" (.51mm). The longer beaks make it easier to bend small diameter loops. Unique features of the plier are the contouring of loops and arches up to .021" x .025" (.55 x .64mm) and the built in cutter that allows wires to be cut from .014" to .020" (.36mm - .51mm).



**ix832**  
**V Bend Plier**

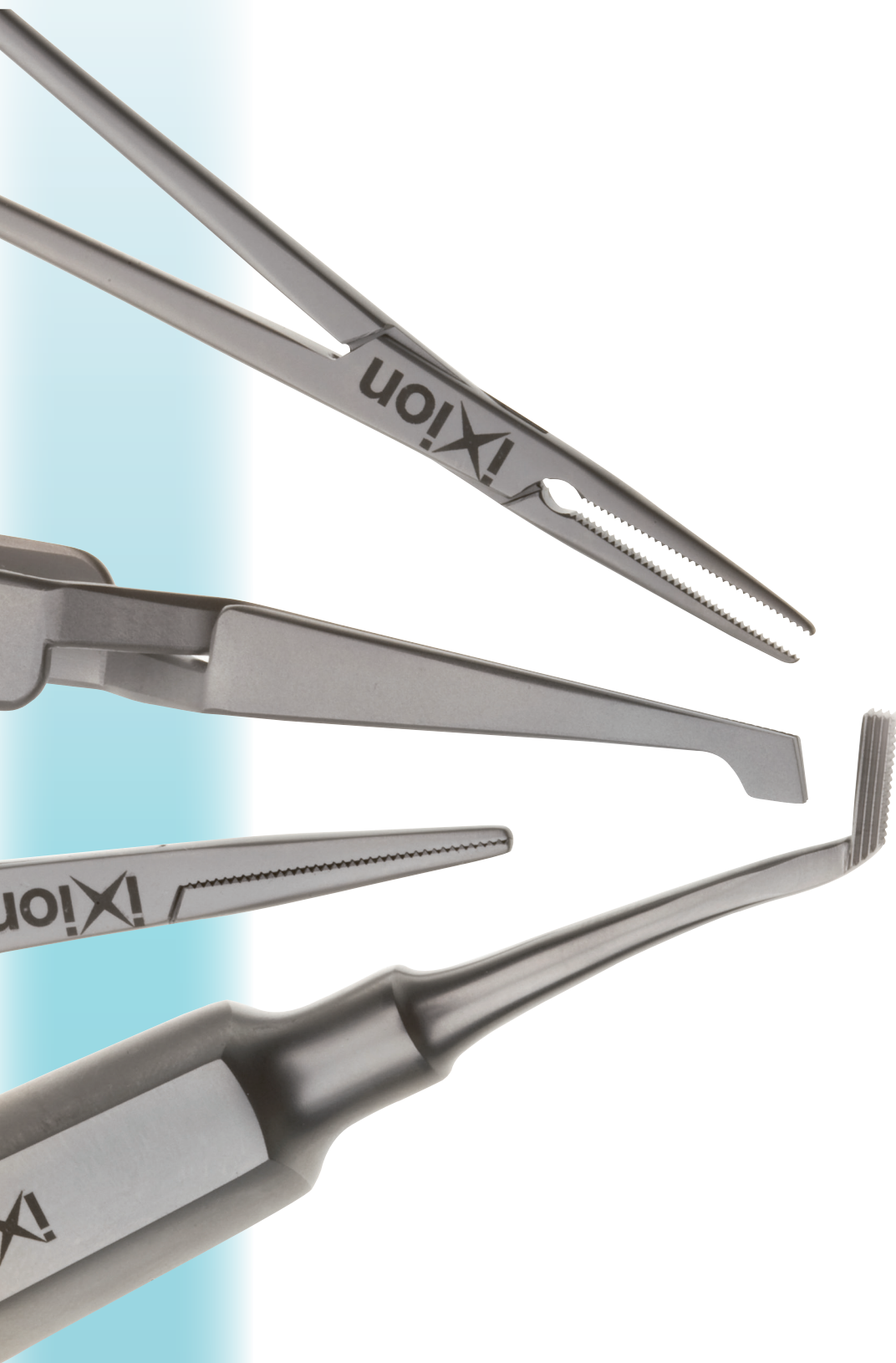
Creates a 1mm V bend to any part of the archwire to stop archwire movement.



**ix830**  
**Hollow Chop**

Convex/Concave tips enable adjustment of all types of loops.





Hand Instruments & Hemostats



**ix650**  
Probe Single Ended



**ix651**  
Probe Double Ended



**ix652**  
Ligature Tucker



**ix653**  
Mitchell Trimmer



**ix656**  
Cement Spatula



**ix657**  
Flat Plastic



**ix654**  
Mirror Handle



**ix655**  
Mirror Heads  
Pk 12



### **ix850**

#### **Direct Bond Bracket Holder**

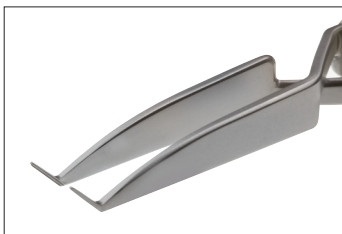
Spring loaded reverse action holds brackets until release is desired. Blade at the end of the tip helps with final bracket slot position.



### **ix630**

#### **Direct Bond Holder with Positioning Blade**

Spring loaded reverse action holds brackets until release is desired. Blade at the end of the tip helps with final bracket slot position.



### **ix631**

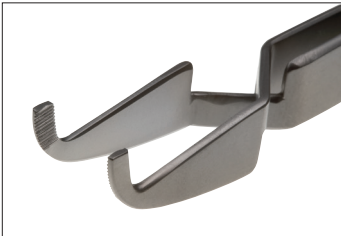
#### **Delux Direct Bond Holder**

The Same high quality finish as IX850, with the addition of fine tips for easy placement of brackets and attachments. Positioning blade helps with bracket slot alignment.



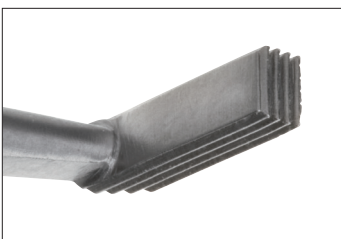
**ix632**  
**Lingual Bracket and Bondable**  
**Tube Placer**

Reverse action Tube placer designed for placing bondable tubes and lingual brackets and attachments. Curved design allows placement with an unobstructed view.



**ix633**  
**Curved Bracket Holder**

Designed for placement of Lingual brackets and attachments. Serrated tips give excellent grip.



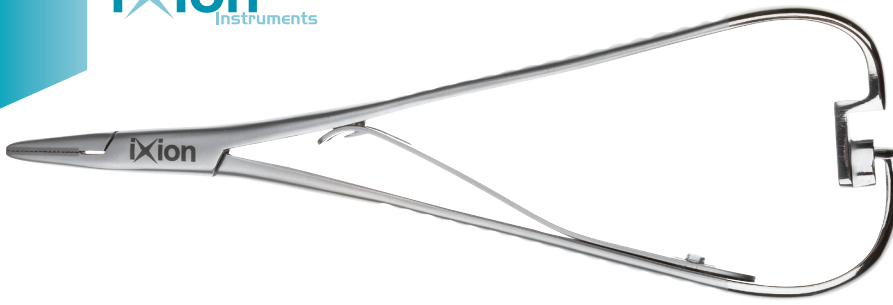
**ix845**  
**Mershon Band Pusher**

Stainless steel serrated tip for positive control.



**ix846**  
**Mershon Band Pusher with Small**  
**Round Handle**

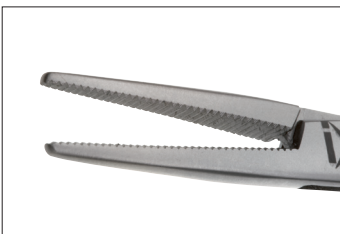
The same tip as ix845, but with lower profile handle.



**ix861**  
**Mathieu Needle Holder with T.C.**  
Sturdy, rounded tips designed for twisting ligature wire. Tungsten Carbide tips ensure excellent wear.



**ix862**  
**Mathieu Needle Holder**  
Sturdy, rounded tips designed for twisting ligature wire.



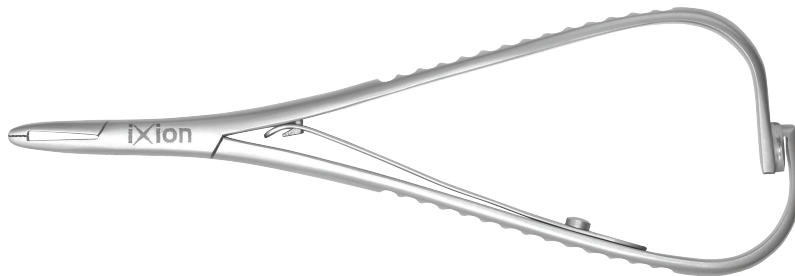
**ix863**  
**Smaha (Straight)**  
Fine tips excellent for placing elastomeric ligatures.



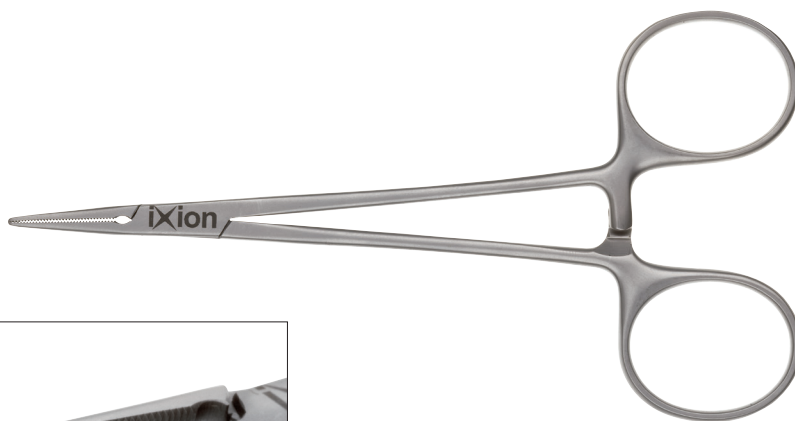


**ix864**  
**Curved Mathieu Needle Holder**  
with T.C.

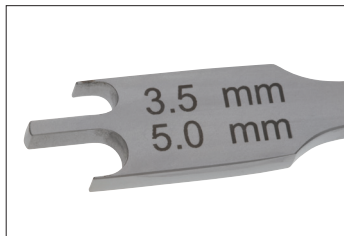
Sturdy rounded tips designed for twisting ligature wire. Curved Tungsten Carbide tip provides easy access in difficult to reach areas and excellent wear.



**ix860**  
**Fine Tip Mathieu Needle Holder**  
Finer tips than the ix861.



**ix855**  
**Mosquito Forceps**  
Ixion Mosquito Forceps have fine serrated tips.



### **ix866**

#### **Bracket Height Gauge**

3.5mm-5mm .018

For precise bracket positioning of .018 brackets.



### **ix867**

#### **Bracket Height Gauge**

3.5mm-5mm .022

For precise bracket positioning of .022 brackets.



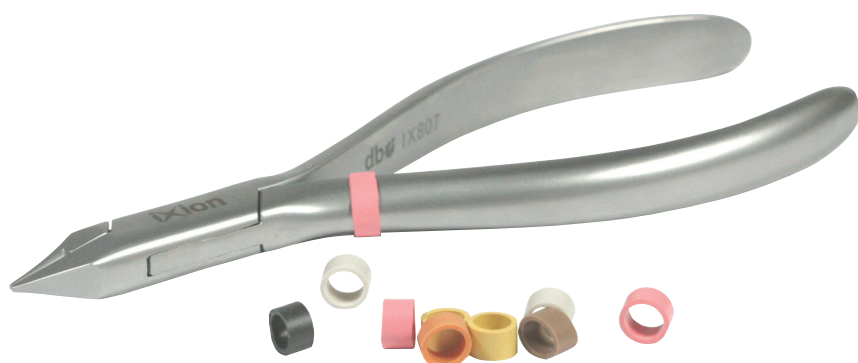
### **ix870**

#### **Serrated Scissors**

With serrated tips. Ideal for cutting stainless steel tape, bands and ligatures.



**ix010**  
**ixion Instrument Oil**  
Specially formulated for orthodontic instruments. Will withstand temperatures of up to 160°C. Supplied with easy to use dispensing nozzle. Size 100ml.



### Instrument Code Rings

Designed to fit orthodontic plier handles, scalers, band seaters, hemostats and other orthodontic instruments. Made out of high temperature silicone that can withstand repeated autoclaving and heat sterilisation. Available in packs of 100.

Blue	ix110
Green	ix111
Purple	ix112
Red	ix113
Black	ix114
Orange	ix115
Pink	ix116

White	ix117
Tan	ix118
Yellow	ix119
Brown	ix120
Dark Grey	ix121
Mixed Colours	ix122





### **ix101**

#### **Small Rack**

Autoclavable Stainless Steel Rack  
size L 110mm x H 120mm



### **ix103**

#### **Large Rack**

Autoclavable Stainless Steel Rack  
size L 310mm x H 125mm



### **ix102**

#### **Medium Rack**

Autoclavable Stainless Steel Rack  
size L 155mm x H 120mm



### **DB04-0000/1**

#### **Clear Upright Instrument Rack**

Keep your instruments organised will hold up to 12 instruments.





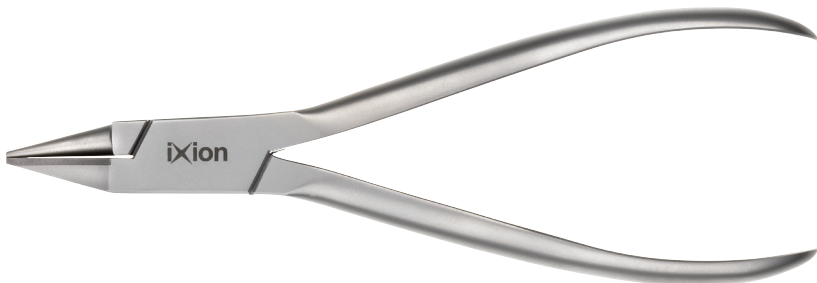
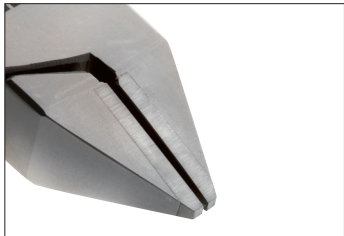
# Laboratory Pliers





**ix164**  
**Adams Plier**

Tungsten Carbide inserted tips,  
prevents slipping which helps to  
produce an accurate Adam's crib.  
Bends hard wire up to .039"  
(1.00mm) max.



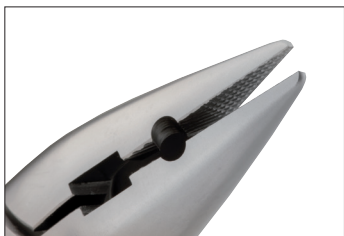
**ix165**  
**Spring Former Plier**

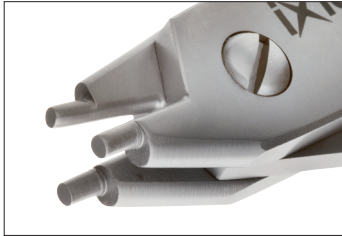
Tungsten Carbide inserted tips.  
Perfectly machined to produce  
accurate coil springs.  
Bends hard wire up to 0.28"  
(0.7mm) max.



**ix700**  
**Universal General Use Plier**

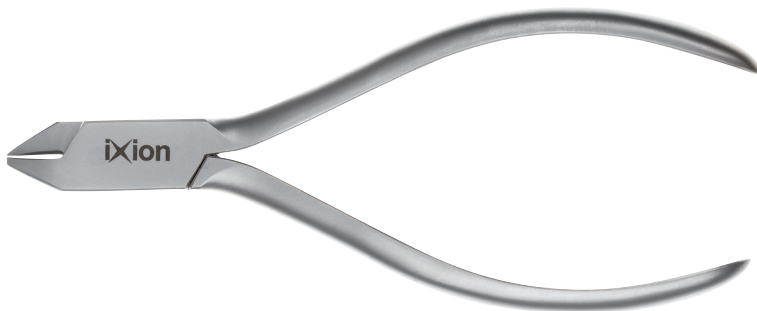
Bends hardwire up to .039"  
(1.0mm ) max.  
Cuts hardwire up to .028"  
(0.7mm) max.





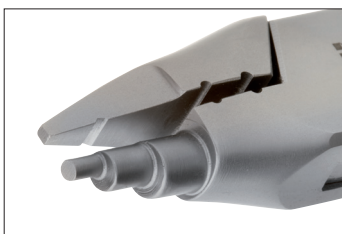
**ix701**  
**Three Jaw Plier**

For hard wire up to 0.59" (1.5mm) max. Can be use to bend the arms of rapid expansion screws.



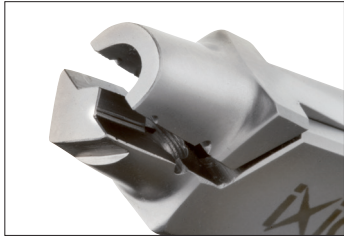
**ix702**  
**Three Jaw Plier**

For hard wire up to .024" (1mm) max.



**ix703**  
**Young Plier**

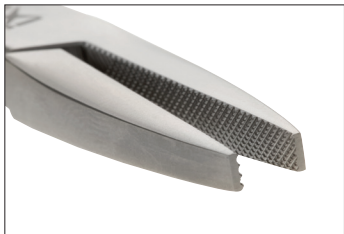
For labial arches and canine loops.  
For hard wire up to .028" (0.7mm) max.



**ix704**  
**Swartz Plier**  
Arrow clasp forming plier, for wire up to .028" (0.7mm. ) max.



**ix705**  
**Lingual Arch Bending Plier**  
Grooved to hold all larger wire sizes, jaw width is .120" (3.05mm). Also ideal for double and triple back bends. Bends round, square and rectangular wires up to .036" (0.91mm) max.



**ix706**  
**Flat Nose Plier**  
Both Tips serrated.  
For use with wire up to .036" (0.9mm) max.





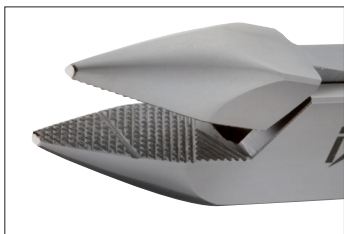


**ix707****Conical Flat Nose Plier**

Has one serrated and one smooth tip.  
For use with wire up to .028"  
(0.7mm.) max.

**ix708****Optical Plier**

For hardwire up to .028"  
(0.7mm) max.

**ix710****Flat Nose Plier**

A favourite general purpose plier -  
both tips of this flat nose plier are  
serrated with a guiding groove for use  
by the technician or clinician for  
chairside adjustments of wire  
up to 0.7mm.

## Recommended washing, handling and sterilization instructions for Ixion™ Instruments

Instruments are not sterile upon receipt and must be sterilised before use in accordance with the following instructions.

Remove all packaging prior to cleaning and sterilization. Alkaline and acidic detergents can cause damage to the instruments. Always use a pH neutral detergent or solution. Do not exceed 160°C.

### Cleaning Instructions

Remove any excess oil with a disposable paper towel.

### Manual

Brush using a neutral cleaning agent and ensure that the instrument is cleaned thoroughly on all surfaces and joints. Rinse under clean running water for 3 minutes. Repeat full process if necessary. Dry using a paper towel.

### Automatic

Use only validated washing machines (HTM 2030 - UK only) and validated cleaning agents suitable for the instruments and washing machine. When removing the instruments from the washing machines please check for cleanliness and repeat the cycle if necessary. Check for any damage or corrosion. Cutting edges should be free of defects and ensure that detachable tips are secure. Always lubricate joints and hinges before sterilisation.

Please note: Instruments left standing wet may corrode! Dry using a paper towel or dry heat not exceeding 160°C.

### Sterilisation

Instruments should be loaded into perforated instrument trays or general purpose sterilisation trays ensuring the cutting edges are not in contact with the trays to avoid damaging the cutting surfaces. When sterilising more than one instrument care should be taken to prevent the instruments from touching as this may cause damage or corrosion.

The UK Department of Health recommends that validated, pre-vacuum autoclaves are used for sterilising wrapped instruments. Autoclaves drawing only a post sterilisation vacuum for drying purposes are not suitable for processing wrapped instruments.

Use only validated vacuum autoclaves (HTM 2010 - UK only). Do not exceed 160°C.

Do not exceed the manufacturers stated maximum load.

### Additional information

Validated ultrasonic baths may be used with validated cleaning agents. Follow instructions for use issued by the equipment and cleaning agent manufacturer.

It remains the responsibility of the reprocessor to ensure that the reprocessing has actually achieved the desired result. This normally requires validation and routine monitoring of the process. Any deviation by the reprocessor from these instructions should be properly evaluated for effectiveness.

### Warranty & Repair

Ixion Instruments are warranted to be free of defects in material and workmanship for 5 years; this covers breakage and joint failure under correct clinical use. Mis-use, abuse or failure to maintain or care for instruments properly will void warranty claims.

Please note: Box joints should be lubricated with a medical grade lubricant before sterilisation.

DB's sole responsibility will be, at its own discretion, to repair, replace or credit the instrument in the event of any claimed defects. DB will sharpen free of charge, within 1 year of purchase, any cutter which fails to cut the intended wire size. Adherence to recommended cleaning, sterilisation and lubrication practices will help ensure optimum instrument performance. Cutting instruments that are used frequently should be reconditioned regularly.

Warranty does not cover routine maintenance, sharpening, repairing minor tip damage or reconditioning. Warranty claims or service requests should be forwarded to your distributor.

### Contact

DB Orthodontics Limited  
Ryefield Way, Silsden, West Yorkshire  
BD20 0EF United Kingdom  
Tel: +44 [0] 1535 656 999  
Fax: +44 [0] 1535 656 969  
email: sales@ixion-instruments.com  
web: www.ixion-instruments.com

# International Distributors



Please visit [www.ixion-instruments.com](http://www.ixion-instruments.com) for an up to date list of our distributors.

## DB Orthodontics wins the Queen's Award for Enterprise in International Trade

On the 21st April 2013, DB Orthodontics received the UK's most prestigious business award in recognition of outstanding achievement in International trade.

The awards are made annually by Her Majesty The Queen of the United Kingdom, given on the advice of the Prime Minister, who is assisted by an Advisory Committee comprising key figures from the Department for Business, Innovation and Skills, the Cabinet and civil service. The judging panel considered turnover, market share, performance and measures taken to stimulate sales in relation to business targets.

We are proud that the DB Orthodontics brand has come to represent high quality innovative products, excellent customer service and value for money to our international and domestic customers alike.

It is an honour to have been recognised with such a prestigious award; winning our first Queen's Award for International Trade is the culmination of all our staff's hard work and commitment to succeed in our vision of becoming a global leader in Orthodontic and laboratory supplies.

We would like to sincerely thank our partners for your continued support and to our customers for your remarkable contribution to our on-going success.



WINNER OF  
THE QUEEN'S AWARDS FOR ENTERPRISE  
INTERNATIONAL TRADE 2013



# Index

## Lingual Pliers

IX950	Weingart 60° Angle	5
IX951	Weingart 60° Angle with T.C.	5
IX952	Stepped Tweed Arch Plier	5
IX953	Cinch Back	6
IX955	Bracket Removing Plier	6
IX956	Mini Ligature Cutter 50° Angle	6
IX956s	Micro Ligature Cutter 50° Angle	7
IX957	Mini Ligature Cutter 60° Angle	7
IX957s	Micro Ligature Cutter 60° Angle	7
IX911	Micro Ligature Cutter	8
IX911L	Micro Long Handled Ligature Cutter	8
IX958	Flush Cut Distal End Safety Hold Cutter Standard	8
IX958s	Flush Cut Distal End Safety Hold Cutter Small	8
IX959	Long Handled Distal End Cutter	9
IX940	Curved Smaha	9
IX632	Lingual Bracket and Bondable Tube Placer	9
IX960	Anterior Debonding Plier	11

## Distal End Cutters

IX900	Distal End Cutter	13
IX901	Long Handled Distal End Cutter	13
IX902	Flush Cut Distal End Cutter Standard	13
IX902s	Flush Cut Distal End Cutter Small	13

## Hard Wire Cutters

IX905	Hard Wire Cutter	14
IX906	Hard Wire Cutter 15° Angle	14
IX908	Heavy Duty Hard Wire Cutter	14

## Pin & Ligature Cutters

IX910	Pin Ligature Cutter 7° Angle	15
IX911	Micro Ligature Cutter	15
IX911L	Micro Long Handled Ligature Cutter	15
IX912	Standard Soft Wire Ligature Cutter	17
IX913	Standard Soft Wire Ligature Cutter	17

## Utility Pliers

IX800	Small Weingart	19
IX801	Small Weingart with T.C.	19
IX802	Large Weingart	19
IX803	Large Weingart with T.C.	20
IX804	Fine Tipped Weingart	20
IX805	How Utility Plier (Straight)	20
IX806	How Utility Plier (Angled)	21
IX820	Crimpable Archwire Hook Plier	21
IX834	Crimping Plier	21
IX825	Posterior Band Remover (Short)	22
IX826	Posterior Band Remover (Long)	22
IX827	Direct Bond Remover (Straight)	22
IX828	Direct Bond Remover (Angled)	23
IX829	Direct Bond Remover	23
IX835	Adhesive Removing Plier	23
IX840	Small Adams Plier	24
IX824	Coon Ligature Tying Plier	24
IX841	Force Module Separator	24
IX895S	Replacement Tips 3/16" (5mm)	25
IX896S	Replacement Tips 1/8" (4mm)	25
IX836	Metal Pad	25
IX837	Replacement Vinyl (150mm)	25

## Wire Bending Pliers

IX807	Light Wire Plier	27
IX808	Light Wire Plier with Cutter/2 Grooves	27
IX809	Light Wire Plier with Cutter	27
IX810	Bird Beak Plier	28
IX872	Bird Beak Plier	28
IX812	Tweed Loop Forming Plier with Cutter	28
IX821	Long Beak Light Wire Plier	29
IX814	O'Brien Loop Forming Plier	29
IX815	Nance Plier	29
IX813	Tweed Arch Forming Plier	30
IX817	De La Rosa	30
IX871	Tweed Arch Forming Plier	30
IX819	Small 3-Jaw Plier	31
IX816	3-Jaw Plier	31
IX823	Fine 3-Jaw Ni Ti Plier	31
IX873	Torquing Plier Set	32
IX811	Light Wire Contouring & Cutting Plier	33
IX832	V Bend Plier	33
IX830	Hollow Chop	33

## Hand Instruments & Hemostats

IX650	Probe Single Ended	35
IX651	Probe Double Ended	35
IX652	Ligature Tucker	35
IX653	Mitchell Trimmer	35
IX656	Cement Spatula	35
IX657	Flat Plastic	35
IX654	Mirror Handle	35
IX655	Mirror Heads pk 12	35
IX850	Direct Bond Bracket Holder	36
IX630	Direct Bond Holder with Positioning Blade	36
IX631	Delux Direct Bond Holder	36
IX632	Lingual Bracket and Bondable Tube Placer	37
IX633	Curved Bracket Holder	37
IX845	Mershon Band Pusher	37
IX846	Mershon Band Pusher Small Round Handle	37
IX861	Mathieu Needle Holder	38
IX862	Mathieu Needle Holder (Standard)	38
IX863	Smaha (Straight)	38
IX864	Curved Mathieu Needle Holder with T.C.	39
IX860	Fine Tip Mathieu Needle Holder	39
IX855	Mosquito Forceps	39

## Miscellaneous

IX866	Bracket Height Gauge 3.5mm-5mm .018	40
IX867	Bracket Height Gauge 3.5mm-5mm .022	40
IX870	Serrated Scissors	40
IX010	Ixon Instrument Oil	41
	Instrument Code Rings	41
IX101	Small Rack	43
IX103	Large Rack	43
IX102	Medium Rack	43
D804-0000/1	Clear Upright Instrument Rack	43

## Laboratory Pliers

IX164	Adams Plier	45
IX165	Spring Former Plier	45
IX700	Universal General Use Plier	45
IX701	Three Jaw Plier	46
IX702	Three Jaw Plier	46
IX703	Young Plier	46
IX704	Swartz Plier	47
IX705	Lingual Arch Bending Plier	47
IX706	Flat Nose Plier	47
IX707	Conical Flat Nose Plier	49
IX708	Optical Plier	49
IX710	Flat Nose Plier	49









WINNER OF  
THE QUEEN'S AWARDS FOR ENTERPRISE  
INTERNATIONAL TRADE 2013

**iXion**<sup>TM</sup>  
Instruments

Is a trademark of DB Orthodontics Ltd.

**db** \*  
orthodontics

DB Orthodontics Limited  
Ryefield Way, Silsden  
West Yorkshire, BD20 0EF  
United Kingdom

tel: +44 [0] 1535 656 999  
fax: +44 [0] 1535 656 969  
web: [www.ixion-instruments.com](http://www.ixion-instruments.com)  
email: [info@ixion-instruments.com](mailto:info@ixion-instruments.com)